



palma

"The "Palma" street light luminaire seems to be designed with a focus on visual integration with the environment, utilizing high-quality LED sources known for their low energy consumption and long lifespan. The mention of asymmetrical light distribution suggests that the luminaire is engineered to direct light in a specific pattern, possibly to maximize illumination where needed while minimizing light spillage in undesired directions."

MATERIAL

Body : Aluminium & Extruded aluminium
Impact Protection : IK08
Ingress Protection : IP65 Module
Diffuser : Polycarbonate Optical Lens
Mounting : Suitable for mounting on 88.9mm OD pole.

ELECTRICAL

Driver : Standard
Power Supply : Integral
Input Voltage : 230-240Vac / 50-60 Hz
Surge : 6kV

PRODUCT CONFIGURATIONS

Wattage : 100W
Light Distribution : Type II / Type III / Type IV
CCT : 3000K / 4000K / 5700K
LED Life Time : L70 B10 1,00,000 H

AREA OF APPLICATION

Illuminating parks, Gardens, commercial & office complex, Street Lighting, Courtyards.

AVAILABLE FINISH

Pure polyester powder coated
RAL 9004 Signal black
RAL 9007 Grey aluminium
RAL 7016 Anthracite grey





Technical Specifications

General

ID	: 4390
System Wattage	: 100W LED
Driver Integral	: Constant Current
Operating Voltage	: 100-300Vac
Operating Temperature	: -15°C~+50°C

Physical

Body	: Aluminium
Diffuser	: Polycarbonate Optical Lens
Mounting	: Suitable for mounting on Ø88.9 OD pole
Finish	: Powder coated RAL 9004 Signal black RAL 9007 Grey aluminium RAL 7016 Anthracite grey

Light Source

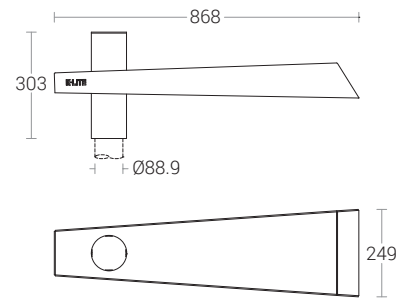
Light Source	: LUMILEDS / OSRAM
CRI (Ra)	: >70
LED Colour Temperature	: 3000K / 4000K / 5700K

Driver

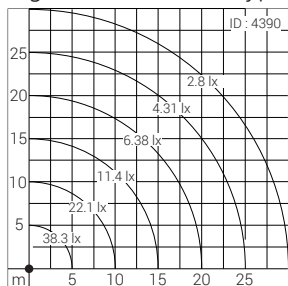
Power Supply	: Integral
Input Voltage	: 230-240Vac
Frequency	: 50-60Hz
Power Factor	: >0.95
THD	: <10%
Surge Protection	: 6KV
Efficiency	: >85%

Optical Performance

Light Distribution	: Type II / Type III / Type IV
--------------------	--------------------------------



Light Distribution - Type III



Applied Photometry : H=10m