

"lyra" pendant and surface-mounted LED ceiling luminaires is the ideal choice for a variety of lighting applications. These fixtures feature high-quality LED sources that offer low energy consumption and an extended service life. Designed to perform at both low and high mounting heights, these luminaires are perfectly suited for installation in a wide range of ceiling types-indoors and outdoors.

MATERIAL

Body : Aluminium
Impact Protection : IK07
Ingress Protection : IP65
Diffuser : Clear Toughened glass
Mounting : Surface / Pendant

ELECTRICAL

Driver : Standard
Power Supply : Integral
Input Voltage : 230-240Vac / 50-60 Hz
Surge : 4KV

PRODUCT CONFIGURATIONS

Wattage : 60W LED
Beam Angle : 12° / 24° / 40°
CCT : 2700K / 3000K / 4000K / 5700K
LED Life Time : L70 B10 60,000 H

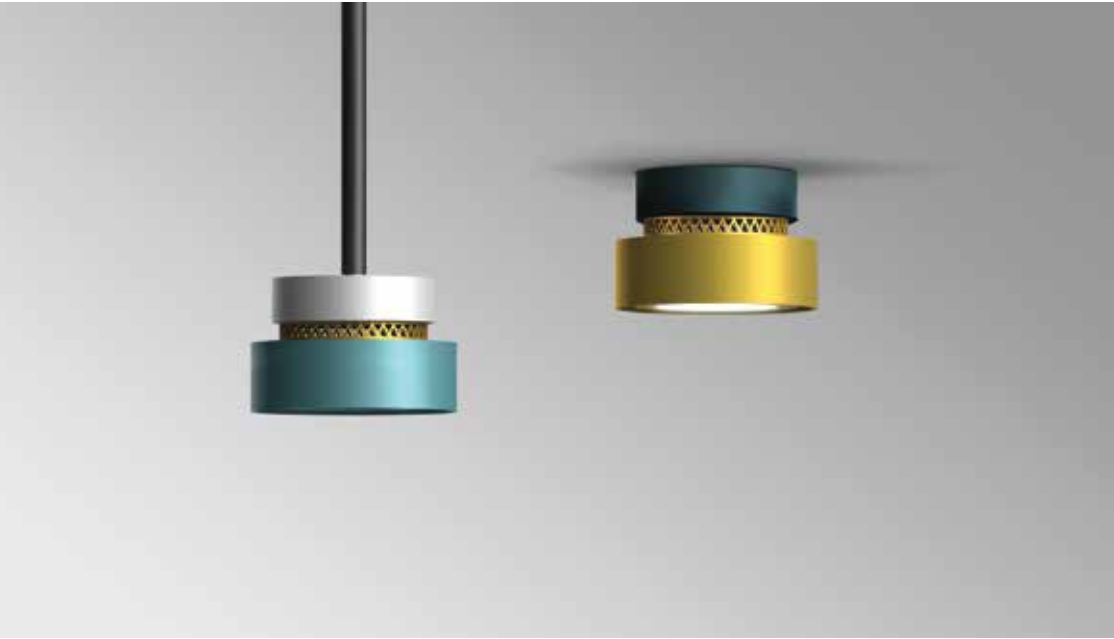
AREA OF APPLICATION

High Ceiling lobby, Retail outlets, Corridors, Corporate, Residential & Educational premises, Hospitality Industry, Commercial & Business Centers.

AVAILABLE FINISH

Pure polyester powder coated
RAL 9004 Black
RAL 9007 Grey aluminium
RAL 7016 Anthracite grey
RAL 9016 Traffic White
Graphite grey





Technical Specifications

General

ID : 22779
 System Wattage : 60W LED
 Driver Integral : Constant Current
 Operating Voltage : 100-300Vac
 Operating Temperature : -15°C~+50°C

Light Source

Light Source : NICHIA
 CRI (Ra) : ≥80
 LED Colour Temperature : 2700K / 3000K / 4000K / 5700K

Physical

Body : Aluminium
 Diffuser : Clear Toughened Glass
 Mounting : Surface / Pendant
 Finish : Powder coated
 RAL 9004 Black
 RAL 9007 Grey aluminium
 RAL 7016 Anthracite grey
 RAL 9016 Traffic White
 Graphite grey

Driver

Power Supply : Integral
 Input Voltage : 230-240Vac
 Frequency : 50-60 Hz
 Power Factor : >0.95
 THD : <10%
 Surge Protection : 4KV
 Efficiency : >80%

Optical Performance

Beam Angle : 12° / 24° / 40°

