

Surface mounted range of LED wall light is perfect fit for varied outdoor lighting applications. Designed to illuminate the wall and surface in front of wall and for light accents on vertical surfaces. Aesthetically designed sturdy construction ensures a long life against all weather condition, maintaining initial performances through the lifetime of the installation. Product offered asymmetrical light distribution.

Product Description

- Luminaire body made of extruded aluminium alloy (grade 6063) with die cast aluminium components and non corrosive SS fasteners.
- Clear toughened glass.
- Luminaire integrated with 30W LED.
- Die Cast aluminium base for easy installation onto the wall.
- Surface mounting on wall using hardware after connecting to the power supply.
- Cable entries for through-wiring of mains supply cable.
- Integral constant current power supply
- CRI (Ra) : ≥ 70
- Prewired with LED driver and suitable for operating on 240V, 50Hz single phase ac supply.
- Ordering guide : KL-24370-CCT (Colour Temperature)
- Available CCT : 2700K, 3000K, 4000K, 5700K



Product Benefits

- High luminous efficiency at reduced wattage.
- Elegance, Functionality.
- Environmental friendly, moisture proof, insect free.
- Low maintenance cost.
- Sustainable LED technology offers durability and optimal light output with low power consumption.

Area of Application

Building facade, Commercial centres, Internal Passages, Walkways, Structures, Pathways in residential buildings & Office Complex.

Available Finish

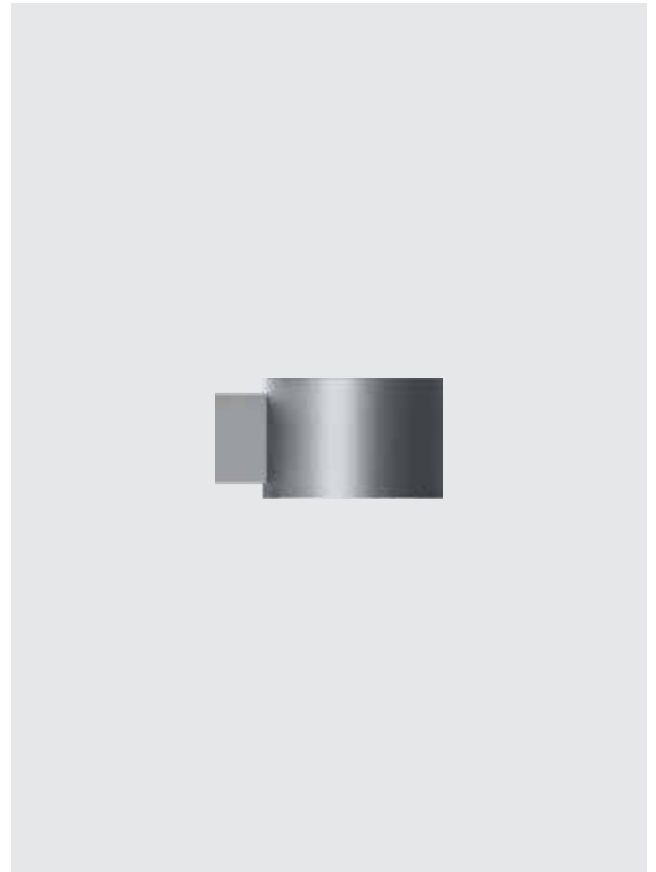
Pure polyester powder coated

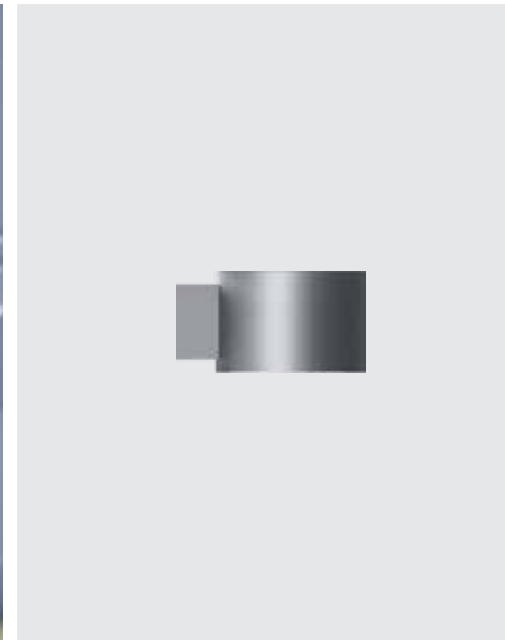
RAL 9004 Black

RAL 9007 Grey aluminium

RAL 7016 Anthracite grey

Graphite grey





Technical Specifications

General

ID : 24370
 System Wattage : 30W LED
 Driver Integral : Constant Current
 Operating Voltage : 100-265Vac
 Operating Temperature : -15°C~+50°C

Light Source

Light Source : LUMILEDS / OSRAM
 CRI (Ra) : >70
 LED Colour Temperature : 2700K / 3000K / 4000K / 5700K

Physical

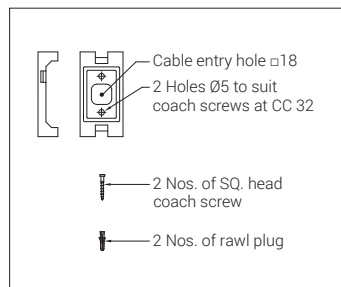
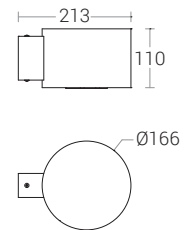
Body : Extruded Aluminium
 Diffuser : Clear Toughened Glass
 Mounting : Wall - Surface
 Finish : Powder coated
 RAL 9004 Black
 RAL 9007 Grey aluminium
 RAL 7016 Anthracite grey
 Graphite grey

Driver

Power Supply : Integral
 Input Voltage : 230-240Vac
 Frequency : 50-60Hz
 Power Factor : >0.95
 THD : <10%
 Surge Protection : 4KV
 Efficiency : >85%

Optical Performance

Light Distribution : Type II



Note : It is our constant endeavor to upgrade the performance of our products. For the latest technical information, IES files and product updates please refer to the website at www.klite.in

Surface mounted range of LED wall light is perfect fit for varied outdoor lighting applications. Designed to illuminate the wall and surface in front of wall and for light accents on vertical surfaces. Aesthetically designed sturdy construction ensures a long life against all weather condition, maintaining initial performances through the lifetime of the installation. Product offered asymmetrical light distribution.

Product Description

- Luminaire made of pressure die cast aluminium with non corrosive SS fasteners.
- Clear toughened glass..
- Luminaire integrated with 50W LED.
- Die Cast aluminium base for easy installation onto the wall.
- Surface mounting on wall using hardware after connecting to the power supply.
- Cable entries for through-wiring of mains supply cable.
- Integral constant current power supply
- CRI (Ra) : ≥ 70
- Prewired with LED driver and suitable for operating on 240V, 50Hz single phase ac supply.
- Ordering guide : KL-24371-CCT (Colour Temperature)
- Available CCT : 2700K, 3000K, 4000K, 5700K



Product Benefits

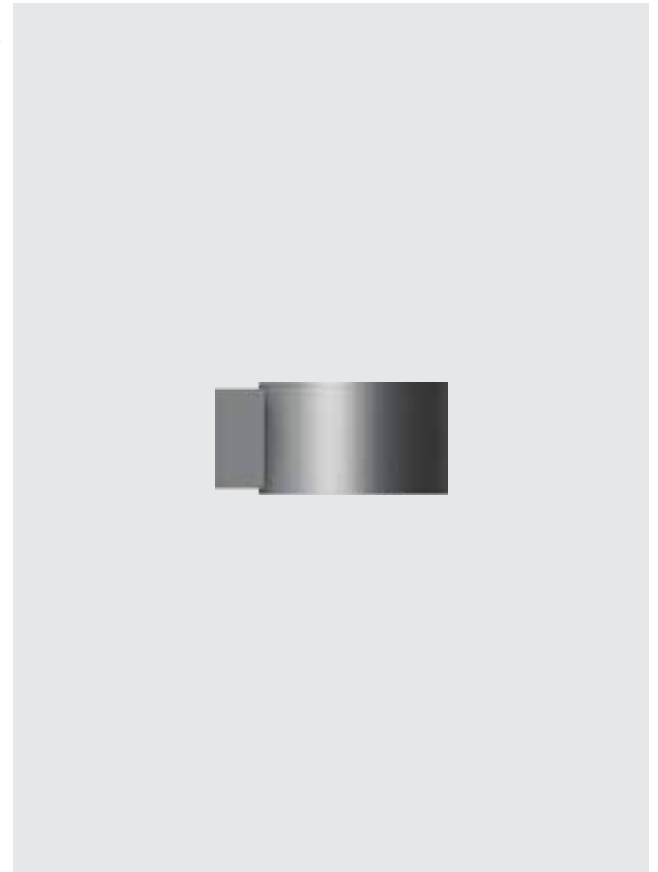
- High luminous efficiency at reduced wattage.
- Elegance, Functionality.
- Environmental friendly, moisture proof, insect free.
- Low maintenance cost.
- Sustainable LED technology offers durability and optimal light output with low power consumption.

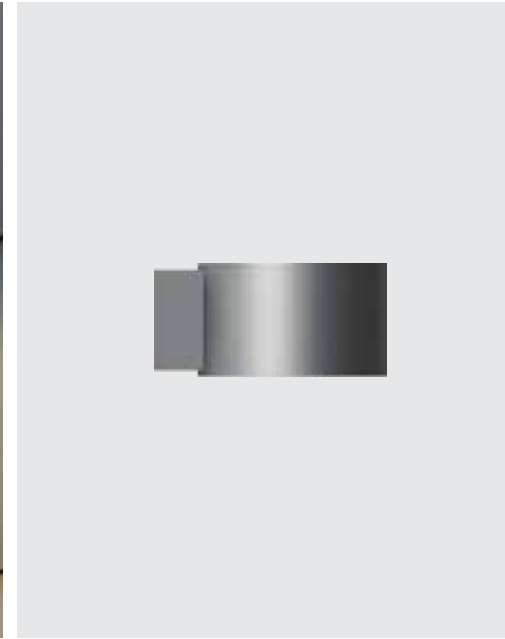
Area of Application

Building facade, Commercial centres, Passages, Walkways, Structures, Pathways in residential buildings & Office Complex.

Available Finish

Pure polyester powder coated
RAL 9004 Black
RAL 9007 Grey aluminium
RAL 7016 Anthracite grey
Graphite grey





Technical Specifications

General

ID : 24371
 System Wattage : 50W LED
 Driver Integral : Constant Current
 Operating Voltage : 100-277Vac
 Operating Temperature : -15°C~+50°C

Light Source

Light Source : LUMILEDS / OSRAM
 CRI (Ra) : >70
 LED Colour Temperature : 2700K, 3000K / 4000K
 5700K

Physical

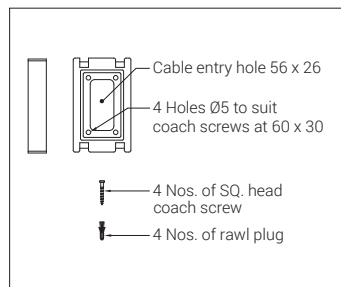
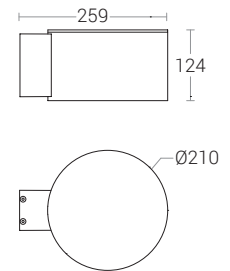
Body : Die-Cast Aluminium
 Diffuser : Clear Toughened Glass
 Mounting : Wall - Surface
 Finish : Powder coated
 RAL 9004 Black
 RAL 9007 Grey aluminium
 RAL 7016 Anthracite grey
 Graphite grey

Driver

Power Supply : Integral
 Input Voltage : 230-240Vac
 Frequency : 50-60Hz
 Power Factor : >0.95
 THD : <10%
 Surge Protection : 6KV
 Efficiency : >88%

Optical Performance

Optical Distribution : Type II



Note : It is our constant endeavor to upgrade the performance of our products. For the latest technical information, IES files and product updates please refer to the website at www.klite.in