

Elegant lighting design, which is suitable for both modern and classic architecture. Ideal for creating visual guidance and exceptional visual comfort. These luminaires offer shielded glare free illumination of ground surface and are perfect for illuminating entrances, footpaths as well as garden and landscape architecture. Bollard luminaires contribute to safety by illuminating pathways and other open spaces.

Product Description

- Luminaire made of extruded aluminium alloy (grade 6063) with die-cast aluminium components and non corrosive SS fasteners.
- Clear toughened glass.
- Luminaire can be aligned on the mounting plate around 360°.
- Mounting plate die cast aluminium double powder coat with an anchorage unit and stainless steel fixing screws.
- Cable entries for through-wiring of mains supply cable
- Integral constant current power supply
- CRI (Ra) : 90
- Prewired with LED driver and suitable for operating on 240V, 50Hz single phase ac supply.
- Ordering guide : KL-24709-CCT (Colour Temperature)
- Available CCT : 2700K, 3000K, 4000K, 6500K



Product Benefits

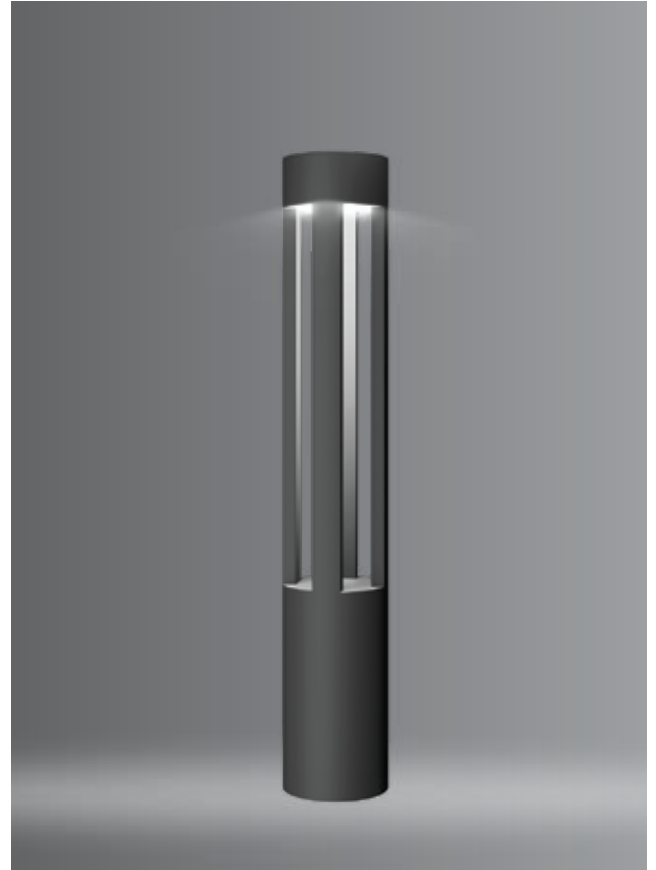
- High luminous efficiency at reduced wattage.
- Elegant, Robust design
- Corrosion resistant and Maintenance free.
- Dark sky compliant protects pedestrians from glare, in addition to preventing spill light above the horizontal plane.
- Sustainable LED technology offers durability and optimal light output with low power consumption.

Area of Application

Suitable for medium / high traffic areas.

Available Finish

Pure polyester powder coated
RAL 9004 Black
RAL 9007 Grey aluminium
RAL 7016 Anthracite grey
Graphite grey





MAKATAB PROJECT, UAE

Technical Specifications

General

ID	: 24709
System Wattage	: 12W LED
Driver Integral	: Constant Current
Operating Voltage	: 100-277Vac
Operating Temperature	: -15°C~+50°C

Light Source

Light Source	: CITIZEN
CRI (Ra)	: 90
LED Colour Temperature	: 2700K / 3000K / 4000K 6500K

Physical

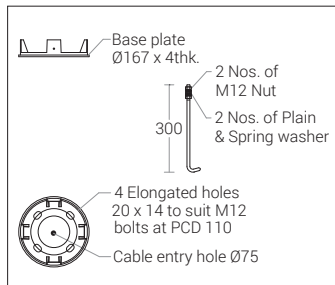
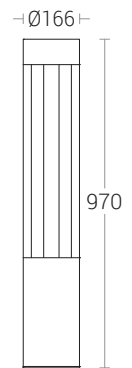
Body	: Extruded Aluminium with Die-Cast Aluminium
Diffuser	: Clear Toughened Glass
Mounting	: Surface - Floor
Finish	: Powder coated RAL 9004 Black RAL 9007 Grey aluminium RAL 7016 Anthracite grey Graphite grey

Driver

Power Supply	: Integral
Input Voltage	: 230-240Vac
Frequency	: 50-60 Hz
Power Factor	: >0.9
THD	: <10%
Surge Protection	: 2.5KV
Efficiency	: >85%

Optical Performance

Light Distribution	: Symmetrical
--------------------	---------------



Note : It is our constant endeavor to upgrade the performance of our products. For the latest technical information, IES files and product updates please refer to the website at www.klite.in