

DWG. No. : KP-DFD-091
SHEET No. : 1 of 1

ALL DIMENSIONS ARE IN mm

F

E

D

C

B

A

F

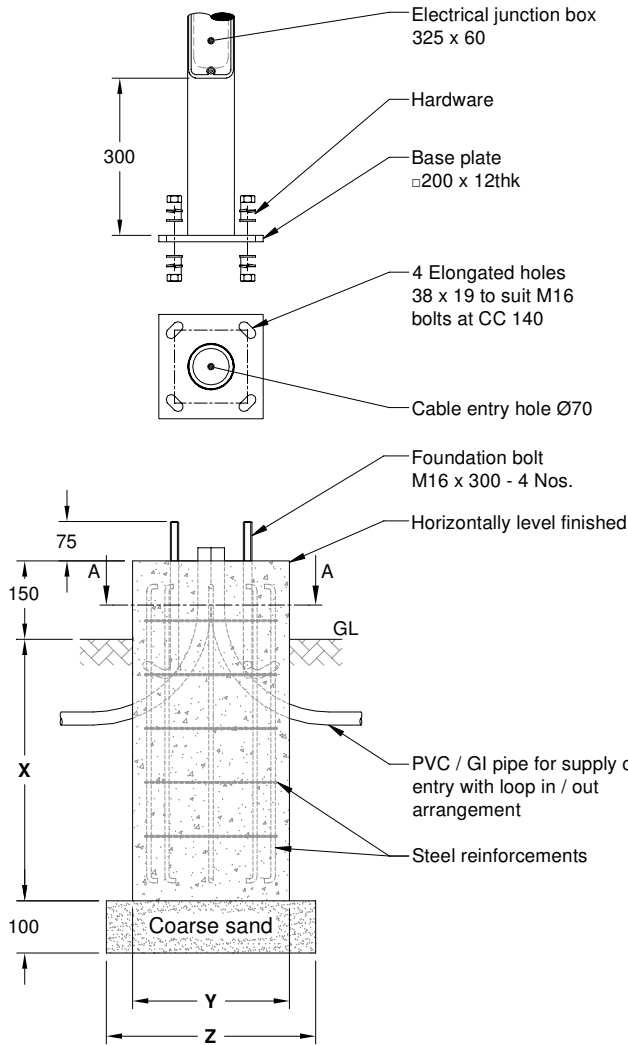
E

D

C

B

A

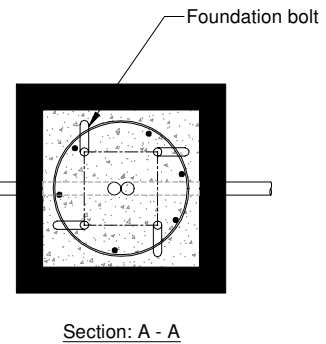


Foundation height

Foundation type	POLE HEIGHT	DIMENSION "X"
"A"	8'	500
"B"	3m - 14'	600

With Base cover & without Base cover option

Foundation type	Horizontal level finished "Y"	Coarse sand "Z"
"C" Without base cover	□300	□400
"D" With base cover	□400	□500



Note :

- Typical foundation drawing suitable for standard soil condition.
- Parameters considered in RCC foundation design :
 - Load bearing capacity of soil (LBC) : 10 Mt/m² (Minimum)
 - Basic wind speed : 50 m/s
 - Grade of steel reinforcement : Fe 415
 - Grade of foundation bolt : 4.6
- Height of foundation above ground level (150mm) may be revised to suit the site conditions especially considering the expected water level stagnation.
- Template supplied is suggested to be used for locating the CC of foundation bolts.
- 4 Nos. of foundation bolt have to be oriented (located), while casting the foundation such that the door of the electrical junction box faces the required direction.
- PVC / GI pipe for entry of supply cable and the materials required for foundation are not scope of our supply.

DRAWN		CHECKED		APPROVED		DATE	SCALE	MATERIAL	REV. No.	REVISION DETAILS	DATE	REVISED	CHD	APPD
BASKAR						29-05-18	1 : 15							
<p style="text-align: center;">K-LITE INDUSTRIES CHENNAI-600 098</p>										<p style="text-align: center;">WKFSCADD SERVER\KP\005.FOUNDATION DETAILS\KP - DFD - 091 (KP-44)\REV 00.DWG</p> <p style="text-align: center;">DETAILED FOUNDATION DRAWING FOR KP - 44 □200 x 12 (FOUNDATION BOLT M16 x 300)</p>				
K-LITE		K-LITE		INDUSTRIES		CHENNAI-600 098				DRG. NO. <p style="text-align: center;">KP-DFD-091</p>		REV 00		SHEET 1 of 1