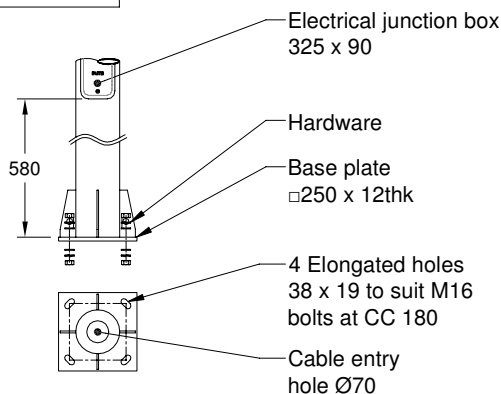
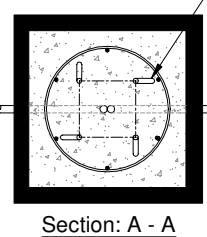
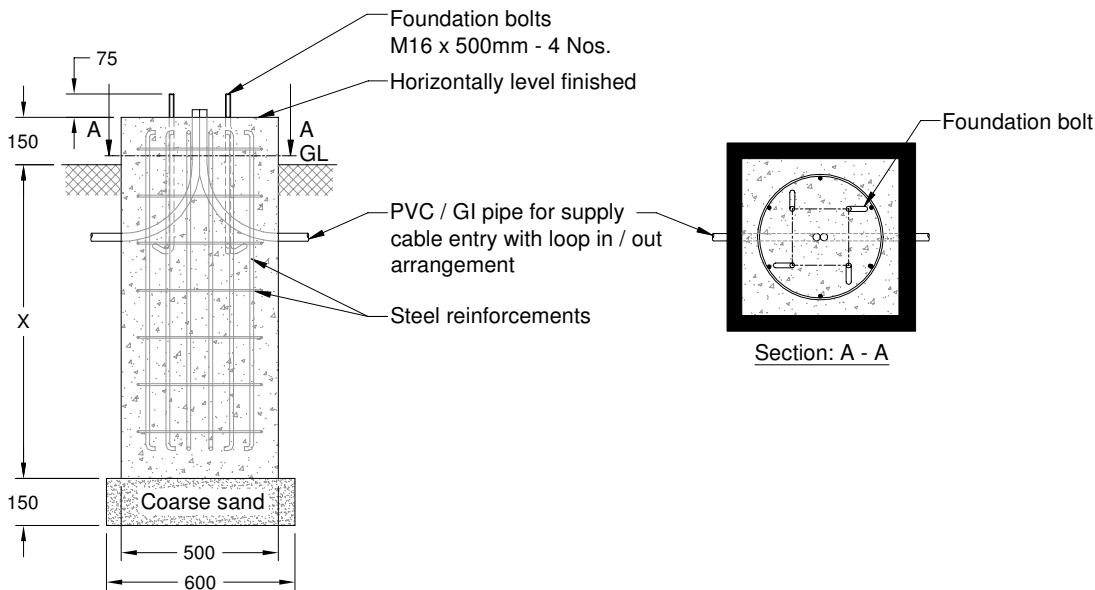


DWG. NO. : KP-DFD-075
SHEET. NO. : 1 of 1

ALL DIMENSIONS ARE IN mm



FOUNDATION TYPE	DIMENSION X	POLE HEIGHT
A	600	14'
B	800	16'
C	1000	5m - 6m



Note :

1. Typical foundation drawing suitable for standard soil condition.
2. Parameters considered in RCC foundation design :
 - Load bearing capacity of soil (LBC) : 10 Mt/m² (Minimum)
 - Basic wind speed : 50 m/s
 - Grade of steel reinforcement : Fe 415
 - Grade of foundation bolt : 4.6
3. Height of foundation above ground level (150mm) may be revised to suit the site conditions especially considering the expected water level stagnation.
4. Template supplied is suggested to be used for locating the CC of foundation bolts.
5. 4 Nos. of foundation bolts have to be oriented (located), while casting the foundation such that the door of the electrical junction box faces the required direction.
6. PVC / GI pipe for entry of supply cable and the materials required for foundation are not scope of our supply.

03.	CABLE ENTRY HOLE REVISED	03-02-18	BASKAR		
02.	BASE PLATE CORNER RADIUS & COMPANY NAME REVISED	02-12-16	SATHISH		
01.	ELECTRICAL JUNCTION BOX DOOR SIZE REVISED	18-03-16	SELVA		
REV. No.	REVISION DETAILS	DATE	REVISED	CHD	APPD

DRAWN	CHECKED	APPROVED	DATE	SCALE	MATERIAL
THIRUPPATHI			10-03-15	1 : 25	-

W:\CADD SERVER\KP\005.FOUNDATION DETAILS\KP - DFD - 075 (KP-34)\REV 03.dwg

K-LITE INDUSTRIES
CHENNAI-600 058

DETAILED FOUNDATION DRAWING FOR KP - 34
□250 x 12 (FOUNDATION BOLT M16 x 500)

DRG. NO.
KP-DFD-075

REV
03

SHEET
1 of 1