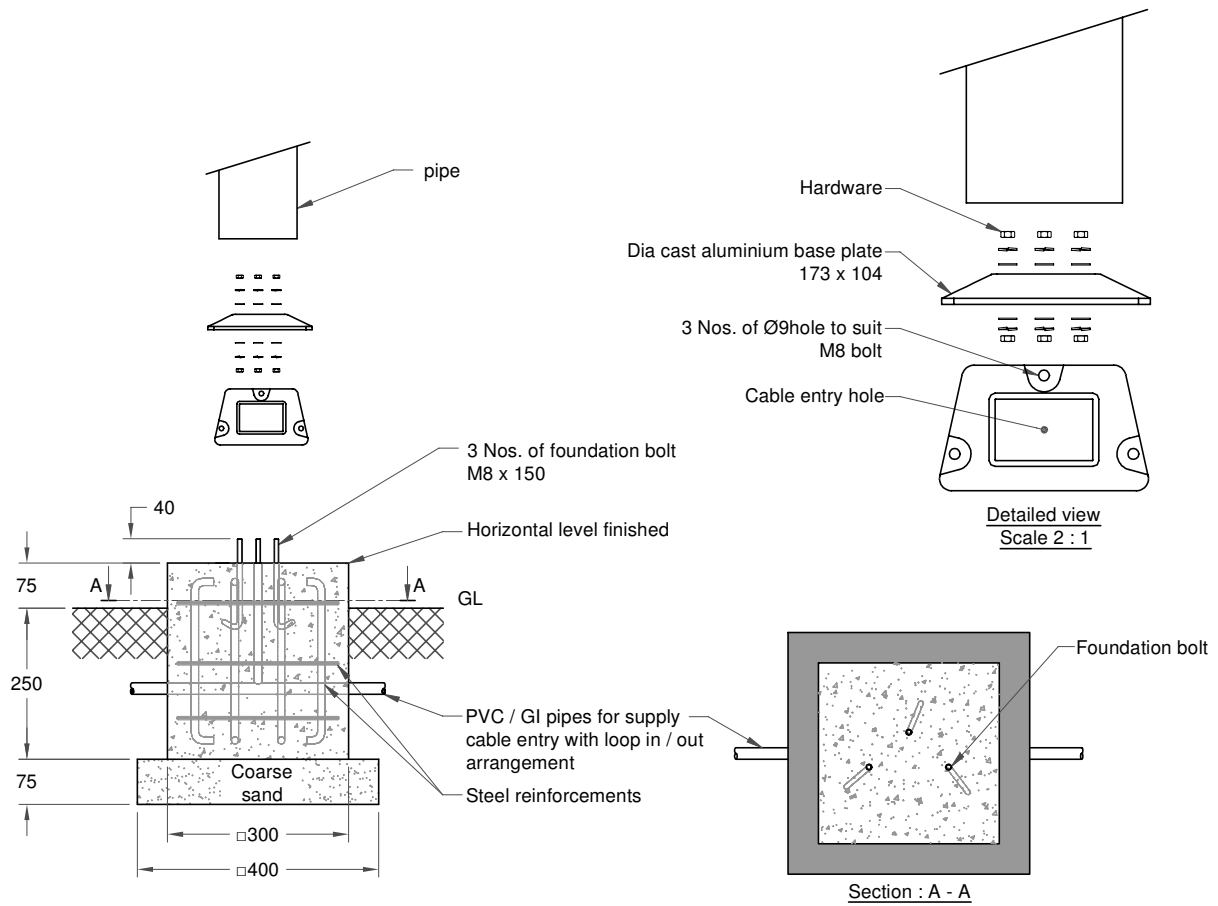


DWG. No. : KL-DFD-117
SHEET No. : 1 of 1


ALL DIMENSIONS ARE IN mm



Note

- Typical foundation drawing suitable for standard soil condition.
- Parameters considered in RCC foundation design :
 - Load bearing capacity of soil (LBC) : 10 Mt/m² (Minimum)
 - Basic wind speed : 50 m/s
 - Grade of steel reinforcement : Fe 415
 - Grade of foundation bolt : 4.6
- Height of foundation above ground level (75mm) may be revised to suit the site conditions especially considering the expected water level.
- Template supplied is suggested to be used for locating the PCD of foundation bolts.
- 3 Nos. of foundation bolt have to be oriented (located), while casting the foundation such that the door of the electrical junction box face the required direction.
- PVC / GI pipes for entry of supply cable and the materials required for foundation are not scope of our supply.

REV. No.	REVISION DETAILS	DATE	REVISED	CHD	APPD
----------	------------------	------	---------	-----	------

DRAWN OOBEDH	CHECKED	APPROVED	DATE 10-08-24	SCALE 1 : 13	MATERIAL -	Y:\K - LITE\006.FOUNDATION DETAILS\KL-DFD-117(M55)\KL-DFD-117, REV 00.dwg			
<div><div>K-LITE</div><div>K-LITE INDUSTRIES PRIVATE LIMITED CHENNAI-600 058</div></div>						DETAILED FOUNDATION DRAWING FOR M55 173 x 104 (FOUNDATION BOLT M8 x 150)			
							DRG. NO. KL-DFD-117		REV 00