

DWG. No. : KL-DFD-108
SHEET No. : 1 of 1

ALL DIMENSIONS ARE IN mm

F

E

D

C

B

A

F

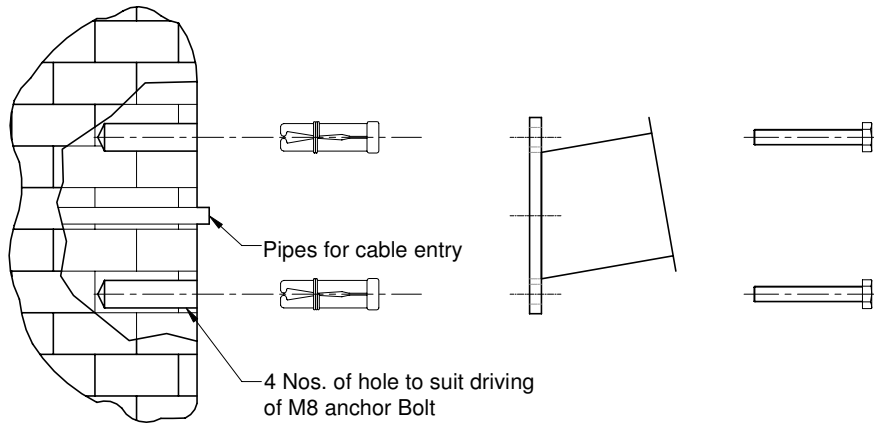
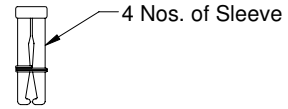
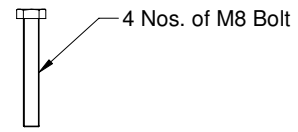
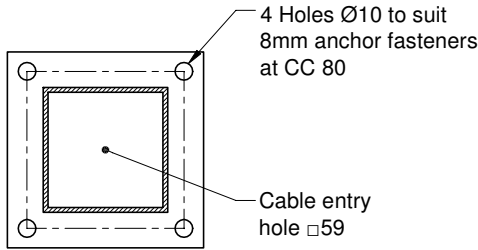
E

D

C

B

A



NOTE:

- 1. Pipe for cable entry shown is only for indicative.
- 2. Pipe for cable entry, sleeve and anchor fasteners are not included in the scope of supply.

REV. No.	REVISION DETAILS	DATE	REVISED	CHD	APPD

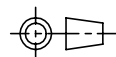
DRAWN KUMARESAN.M	CHECKED	APPROVED	DATE 23-09-2021	SCALE 1 : 7	MATERIAL -
----------------------	---------	----------	--------------------	----------------	---------------

Z:\K - LITE\006.FOUNDATION DETAILS\KL - DFD - 108 (W36)\REV 00.dwg

DETAILED MOUNTING DRAWING FOR W36 ANGLE POLAR

K-LITE

K-LITE INDUSTRIES
CHENNAI-600 058



DRG. NO.

KL-DFD-108

REV
00

SHEET
1 of 1