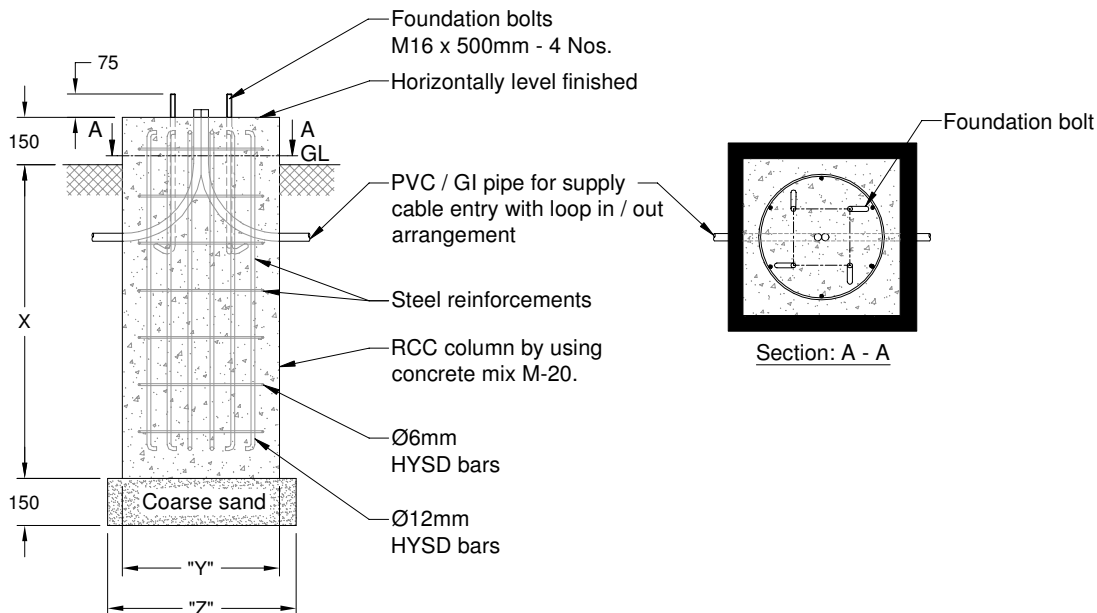
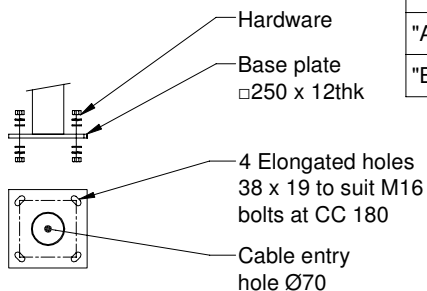


Foundation type	DIMENSION X	Horizontal level finished "Y"	Coarse sand "Z"
"A" Without base cover	800	□400	□500
"B" With base cover	800	□500	□600



Note :

1. Typical foundation drawing suitable for standard soil condition.
2. RCC 1:2:3 (M20) for column using 20mm stone jelly.
3. Parameters considered in RCC foundation design :
 - Load bearing capacity of soil (LBC) : 10 Mt/m² (Minimum)
 - Basic wind speed : 50 m/s
 - Grade of steel reinforcement : Fe 415
 - Grade of foundation bolt : 4.6
4. Height of foundation above ground level (150mm) may be revised to suit the site conditions especially considering the expected water level stagnation.
5. Template supplied is suggested to be used for locating the CC of foundation bolts.
6. 4 Nos. of foundation bolts have to be oriented (located), while casting the foundation such that the door of the electrical junction box faces the required direction.
7. PVC / GI pipe for entry of supply cable and the materials required for foundation are not scope of our supply.

REV. No.	REVISION DETAILS	DATE	REVISED	CHD	APPD

DRAWN R.SATHISH	CHECKED	APPROVED	DATE 13-01-2021	SCALE 1 : 25	MATERIAL -	\\fs1\cadd server\kp\005.FOUNDATION DETAILS\KP - DFD - 127 (KP-90)\REV 00.dwg
--------------------	---------	----------	--------------------	-----------------	---------------	---

K-LITE INDUSTRIES
CHENNAI-600 058

DETAILED FOUNDATION DRAWING FOR KP - 90
□250 x 12 (FOUNDATION BOLT M16 x 500)

DRG. NO.
KP-DFD-127

REV
00

SHEET
1 of 1