

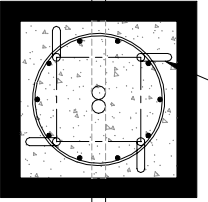
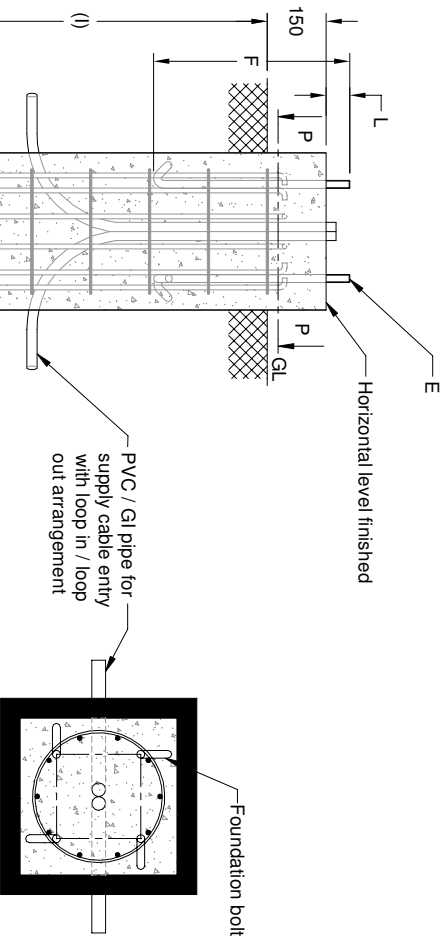
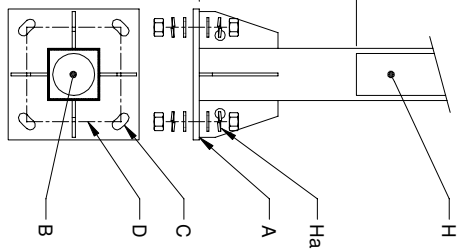
ALL DIMENSIONS ARE IN MM

K - LITE STANDARD (S1) POLE FOUNDATION DETAILS

Figure	Pole Height	Base plate (A)	Cable entry Hole(B)	No. of holes/ bolts (C)	CC (D)	Foundation bolt projection height (L)	Bolt (E)	Length (F)	Junction box from base plate (G)	Electrical Junction box (H)	RCC Height below GL / Digging depth(I)	Length of RCC layer (J)	Length of coarse sand layer (K)
KP-57.3	4m to 6m	□250 x 12thk	Ø70	4	180	75	M16	500	300	320 x 60	1000	□400	□500
KP-57.4	4m to 6m	□250 x 12thk	Ø70	4	180	75	M16	500	300	330 x 75	1000	□400	□500
KP-57.5	6m to 9m	□300 x 16thk	Ø70	4	215	90	M20	500	300	330 x 75	1200	□400	□500
KP-57.7	7m to 9m	□300 x 16thk	Ø70	4	215	90	M20	500	300	330 x 75	1200	□400	□500
KP-57.8	10m to 12m	□400 x 16thk	Ø125	4	300	90	M20	700	300	330 x 75	1800	□500	□600

Note :

1. Typical foundation drawing for standard soil condition.
2. Parameters considered in RCC foundation design :
 Load bearing capacity of soil (LBC) : 10 M/M² (Minimum)
 Basic wind speed : 50 m/s
 Grade of steel reinforcement : Fe 415
 Grade of foundation bolt : 4.6
3. Height of foundation above ground level (150mm) may be revised to suit the site conditions especially considering the expected water level stagnation.
4. Template supplied is suggested to be used for locating the CC of foundation bolts.
5. 4 Nos. of foundation bolt have to be oriented (located), while casting the foundation such that the door of the electrical junction box face the required direction.
6. PVC / GI pipe for entry of supply cable and the materials required for foundation are not scope of our supply.



REV. No.	REVISION DETAILS	DATE	REVISED	CHD	APPD
01	Fig.3,4,5,9 CABLE ENTRY HOLE REVISED	24-12-15	SATHISH		
02	COMPANY NAME REVISED	17-09-16	SATHISH		
03	FOUNDATION No. 57.7,57.8 ELECTRICAL JUNCTION BOX SIZE REVISED.	14-11-17	BASKAR		
04	CABLE ENTRY HOLE REVISED	13-02-19	SATHISH		
05	ELECTRICAL JUNCTION BOX REVISED	12-06-19	THIRUPATHI		

DRAWN	CHECKED	APPROVED	DATE	SCALE	MATERIAL
THIRUPATHI			27-03-15	1 : 30	

DETAILED FOUNDATION DRAWING FOR KP - 57
 SURFACE MOUNTED SQUARE POLE

K-LITE
 K-LITE INDUSTRIES
 CHENNAI-600 058

DRG. NO.	REV	SHEET
KP-DFD-082	05	1 of 1